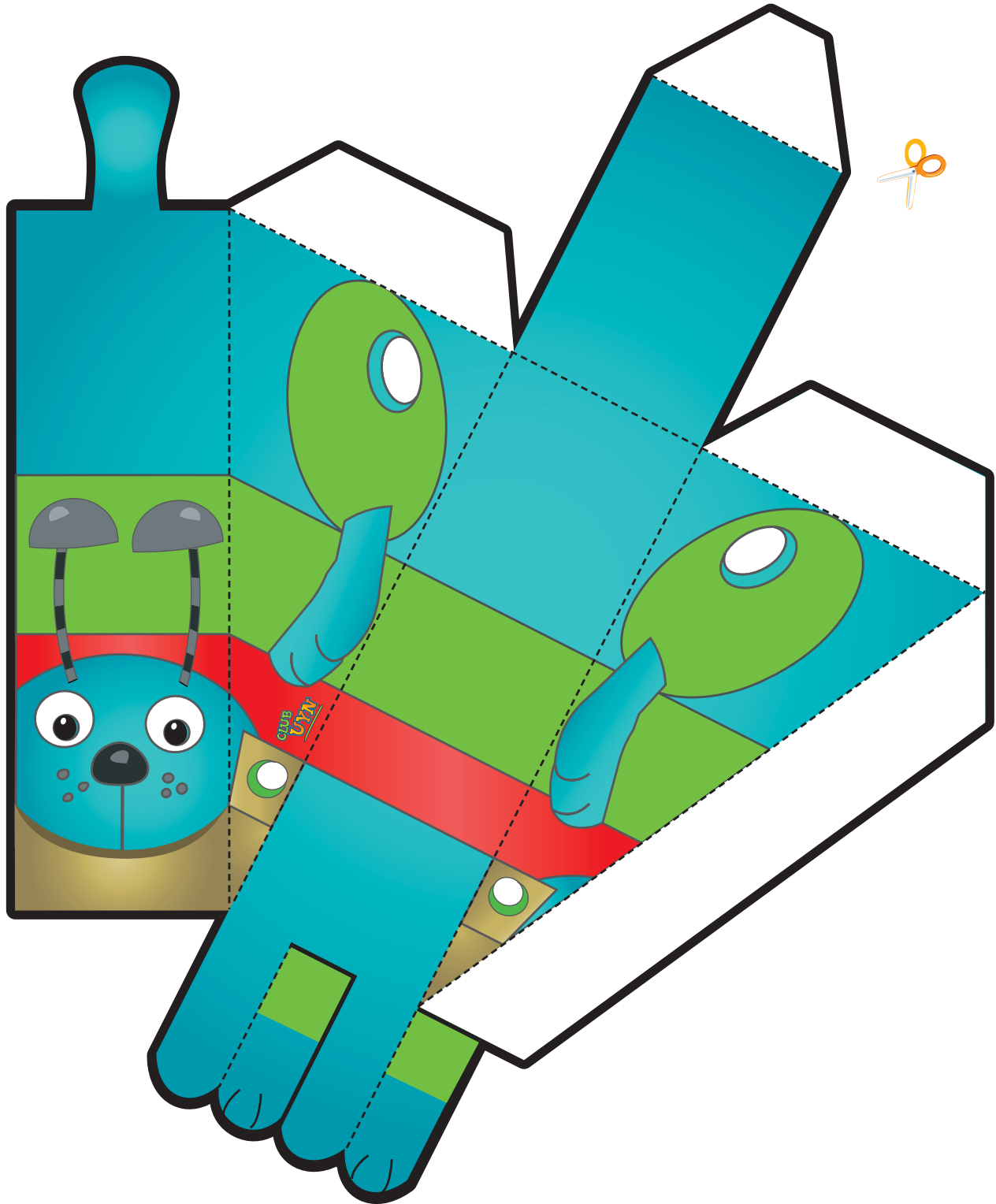


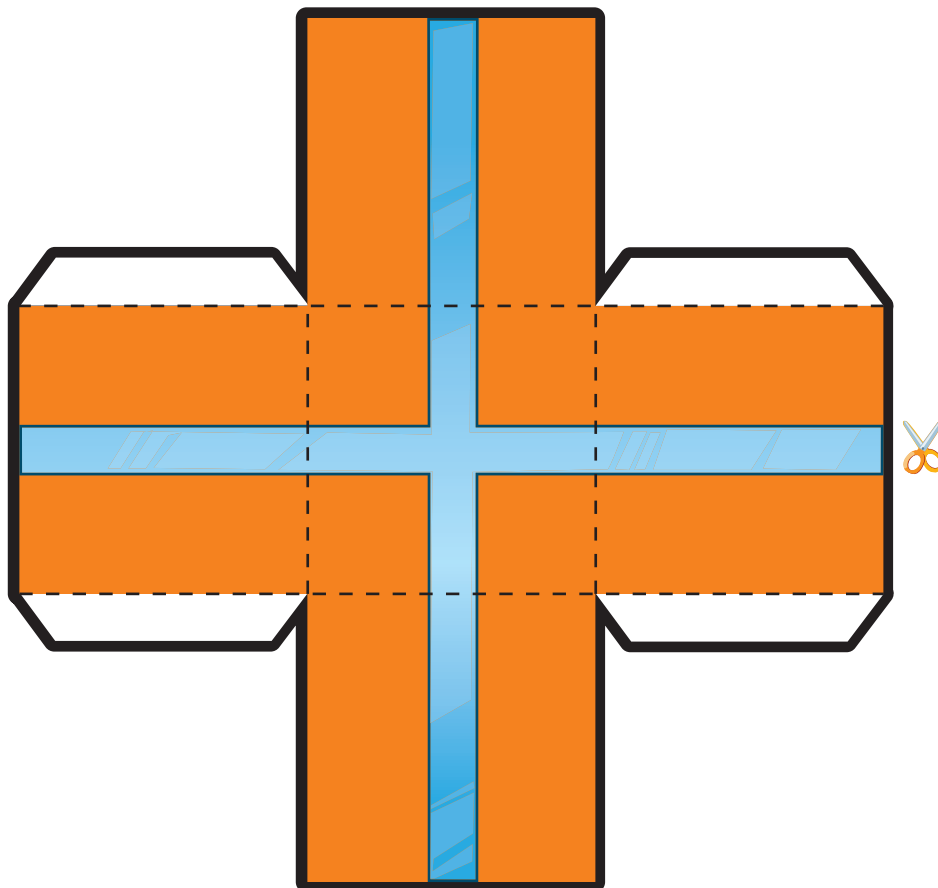
Rockin' Router Toys!

- 1 Cut out Router along the solid black lines.
(Hint: Don't forget his paw!)
- 2 Fold ALL the dotted lines, but don't glue anything together yet!
- 3 Fold him up so all the white tabs are inside.
(Hint: He should look like a big triangle!)
- 4 Now glue the colored tabs onto the white tabs.
You're done!



Rockin' Router Toys!

- 1 Cut out the gift box along the solid black lines.
- 2 Fold ALL the dotted lines, but don't glue anything together yet!
- 3 Fold the box and top so all the white tabs are inside. (Hint: the bottom should make a cube!)
- 4 Now glue each of the tabs together. You're done!



Rockin' Router Toys!

